



M/V STJERNEBORG

General information

Builder:	Niteroi, ex. Maua, Brazil	
Flag:	Singapore	
Port of Reg.:	Singapore	
Vessel:	Stjerneborg	Built 1994 (elongated and rejuvenated in 2012)
P & I Club:	The Standard	
Call Sign:	9V8703	
IMO No.:	8508369	
Classification Society:	Rina	
Type:	RO/RO / LO/LO Cargo Ship	
Max. Speed:	About 15 knots	

Dimensions

Length Overall:	174.30 m
Length Between Perpendicular:	160.06 m
Length with Ramp Down:	196.60 m
Beam:	25.80 m
Depth Moulded:	16.30 m
Summer Draft:	7.20 m
Max Height Above Keel:	48.40 m

Tonnage

DWAT:	14,730 Ts
GT/NT:	20,370/ 6,111 Ts
Light Weight:	8,800 Ts
Displacement:	23,684 Ts

Cargo capacities

Lane Meters	
Tank top	653 LM
Main Deck	1,243 LM
Weather Deck	986 LM
Total	2,882 LM
Square Meters	
Tank Top	2,189 sqm
Main Deck	3,642 sqm
Weather Deck	2,502 sqm
Total	8,333 sqm
Hold Capacity	abt. 33.999 M3
Car Deck capacity	abt. 372
TEU Capacity	904 TEU
Stern Ramp Capacity	120 MT

Cranes

Two Hagglund cranes – lifting capacity (SWL):
36,00 t Max. outreach: 30.00 m

Free heights

Main Deck:	7.00 m
Tank Top:	6.20 / 4.30 m
Stern Ramp:	7.00 m

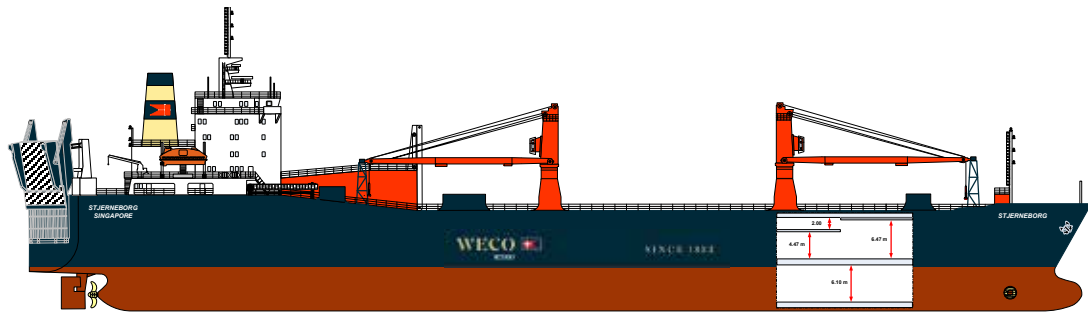
Load distribution

Weather Deck:	1.90 mt/sqm
Main Deck:	2.70mt/sqm
Tank Top:	4.0 mt/sqm

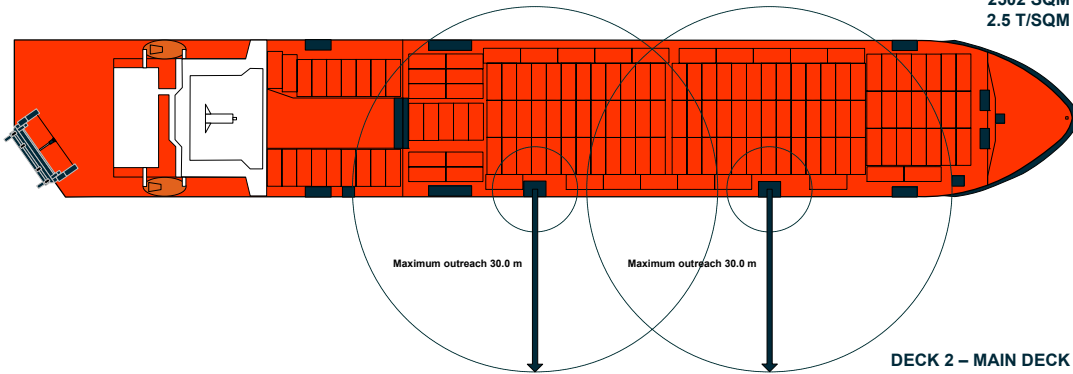
Weco RoRo

www.wecororo.com

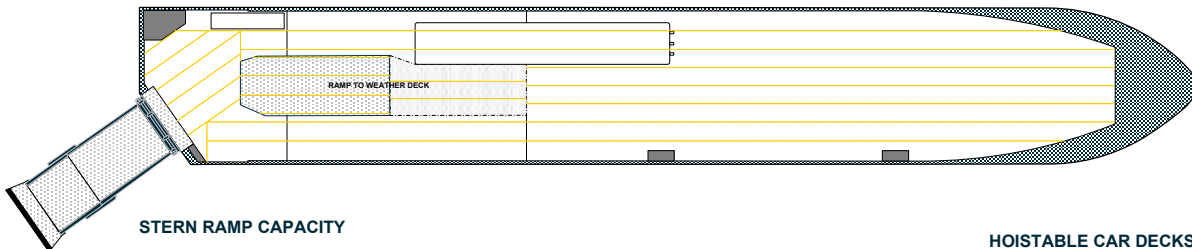
M/V Stjerneborg / (container plan basis shore crane operation)



DECK 3 – WEATHER DECK
 325 TEU
 986 LM
 2502 SQM
 2.5 T/SQM

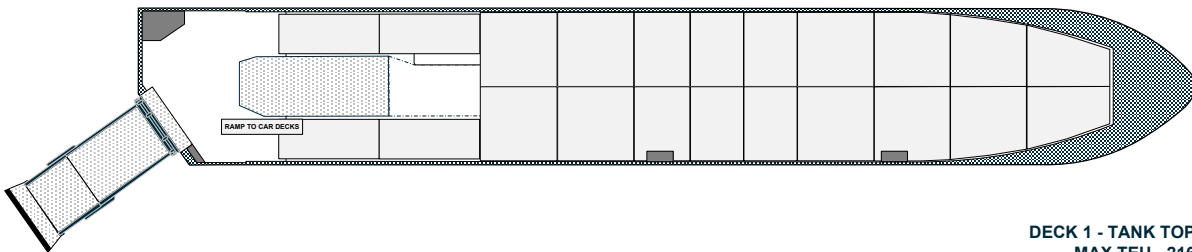


DECK 2 – MAIN DECK
 363 TEU
 1243 LM
 SQM - 3642
 3.0 T/SQM



STERN RAMP CAPACITY
 120 T

HOISTABLE CAR DECKS
 CARS - 363



DECK 1 - TANK TOP
 MAX TEU - 216
 653 LM
 2189 SQM
 6.0 T/SQM

